

FOR INTERNATIONAL STUDENTS & AMERICANS LIVING ABROAD



RIDER
UNIVERSITY

Lawrenceville and Princeton, New Jersey, USA

www.rider.edu/global



FIND YOUR FUTURE HERE.

For International Students & Americans Living Abroad

Front Cover & Above:
DAY AND NIGHT, you can
connect with friends on Rider's
Lawrenceville Campus



IMPRESSIVE ACADEMICS

Rider offers more than 100 respected and career-focused undergraduate and graduate degree programs in:

- Business
- Education
- Fine Arts
- Liberal Arts and Sciences
- Music
- Performing Arts
- ESL Program

- **U.S. News & World Report** ranks Rider in the top tier of northern regional universities offering master’s degrees.
- **Princeton Review** ranks Rider as “A Best 378 College.”
- Our **Westminster Choir College** is renowned internationally as among the best schools of its kind.
- **98% of our professors hold a Ph.D.** or the highest degree in their discipline.

STUDENT/FACULTY RESEARCH OPPORTUNITIES on nationally-funded research projects are available beginning in the freshman year.



“With a top-ranked business school, Rider was the right place for me to pursue my graduate degree. Living on campus, I’ve experienced the perfect combination of academic and social life.”

Layla Al Khalefah • Master of Business Administration (M.B.A.)

ACCREDITATIONS

Rider University is fully accredited by these prestigious educational organizations:

- The Middle States Commission on Higher Education
- AACSB International – The Association to Advance Collegiate Schools of Business (dually accredited in business and accounting)
- National Council for Accreditation of Teacher Education (NCATE)
- National Association of Schools of Music (NASM)
- Council for Accreditation of Counseling and Related Education Programs (CACREP)
- National Association of School Psychologists (NASP)



“At Rider’s Westminster Choir College, there are brilliant faculties and talented students to help you improve your art. It’s the perfect choice for students who want to be true musicians!”

Hunchul Hwang • Master of Music in Sacred Music (Voice Primary)

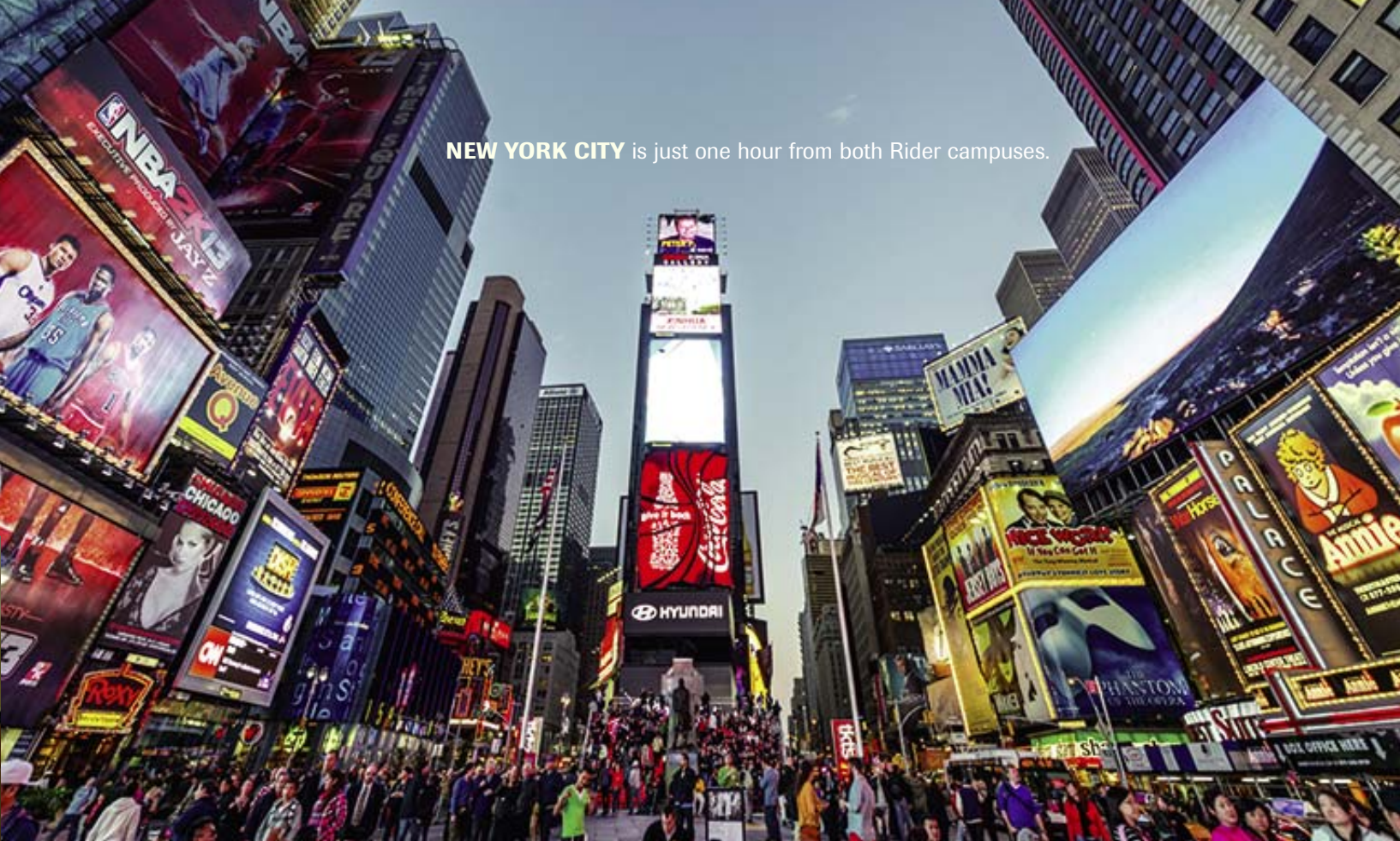


RIDER FACTS

- Founded in 1865; 1992 merged with Westminster Choir College in 1992
- Private, coeducational
- 3,845 undergraduates and 1,000 graduate students attend the Lawrenceville Campus
- 300 undergraduates and 125 graduate students attend the Princeton Campus (Westminster Choir College)
- Rider students come from 40 U.S. states and 77 countries
- 55,000 alumni in all 50 states, District of Columbia, Puerto Rico and 89 countries



PROFESSIONAL INTERNSHIPS let you test your career choice and build credentials.



SUCCEEDING AT RIDER

A Sampling of Internships & Jobs Held by Rider Students

Bloomberg
Bristol-Myers Squibb
Cisco Systems
Dell
Deloitte
Disney Cruise Line
Dow Jones/News Corp
Educational Testing Service (ETS)
Ernst & Young
Estée Lauder
Facebook
Johnson & Johnson
KPMG
Merrill Lynch
Miele, Inc.
New York Jets
Philadelphia Inquirer
PriceWaterhouseCoopers
Sony Music
Standard Chartered
The White House
Tyco
Unisys

RIDER'S OUTCOMES FOR SUCCESS

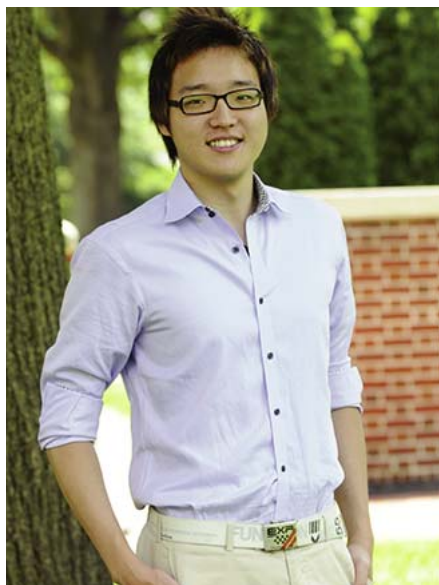
At Rider University, you'll build the foundation to achieve your professional goals through the exceptional quality of our academic programs, professors, and student-centered classes.

The proof is in the success of our students and graduates:

- 1,000+** Number of internships, co-ops and field placements completed by Rider students every year
- 97%** Percentage of graduates who are employed or enrolled in graduate or professional study within six months of graduation
- 262** Rider alumni who are presidents, CEOs, or leaders of national or international corporations or organizations

"At Rider, I became more culturally aware as I became friends with students from America and many other countries. Here, you feel like you are at home when you are away from home."

ChangSung Bae • Master of Business Administration (M.B.A.) • Employer: Deloitte



"Westminster's Princeton Campus is just an hour from New York and Philadelphia – offering access to outstanding music and art. It's an ideal place to achieve your musical dream."

Ruisha Zhang • Master of Music in Piano Pedagogy

LOCATION COUNTS

Rider's campuses will connect you to unforgettable opportunities.

- Our **Lawrenceville Campus** is home to our programs in Business Administration, Liberal Arts, Education and Sciences, and Fine and Performing Arts.
- Rider's **Westminster Choir College** is based in Princeton, NJ, close to Princeton University.
- New York City and Philadelphia can be easily reached by train or car.



DISTANCES

New York City: 92 km
Philadelphia: 61 km
Boston: 439 km
Washington, DC: 294 km

CLIMATE

Winter: -12 to -15 degrees Celsius
Summer: 32 to 35 degrees Celsius



STUDY ABROAD OPTIONS help you grow as an individual and global citizen.



AT RIDER'S WESTMINSTER CHOIR COLLEGE, its conservatory-style environment promotes close friendships among students.



BROADEN YOUR HORIZONS

We value a global perspective at Rider — and the unique insights and contributions that international students bring to our University community.

- Most majors feature selected classes that focus exclusively on global topics.
- Faculty-led **short-term travel abroad experiences** combine academic study and cultural immersion.



“Rider’s professors are highly educated and well-connected individuals who delight in seeing their students excel. Thanks to one of my professors, I’m now interning with one of America’s leading research companies!”

Karen Acquah • Pre-Med



HOME AWAY FROM HOME

Rider offers personal attention and a friendly campus community, plus all the resources of a leading American university, including:

- A 12:1 student-to-professor ratio, offering small, interactive classes.
- More than **150 student clubs and organizations** to meet and network with other students.
- A wide range of on-campus social and cultural activities, from concerts and plays to guest lectures and entertainers.

Athletics

20 NCAA Division I Sports
14 Club Sports
Year-Round Intramural Sports

Student Organizations

American Medical Student Association
Asian Students at Rider
Black Student Union
International Students Association
Latin American Student Organization
National Model United Nations
Organization of Caribbean-Affiliated Students
Saudi Culture Club
Student Entertainment Council
Student Government Association

Campus Housing

Housing is available on both the Lawrenceville and Princeton campuses, but international students are not required to live on campus.

Student Health Services

Health clinics are available on both campuses.

Safety

Both campuses are located in safe, suburban communities with around-the-clock campus security.

APPLYING FOR UNDERGRADUATE ADMISSION

Undergraduate Students

BASIC ADMISSION REQUIREMENTS

All prospective undergraduates are required to submit the following:

1. Application for Undergraduate Admission. (Rider uses the Common Application, available at www.commonapp.org)
2. \$50 non-refundable application fee
3. Essay
4. One letter of recommendation
5. Official TOEFL or IELTS results (required for non-native English speakers; not required of students attending International Schools)
 - 550/paper-based TOEFL
 - 80/Internet-based TOEFL (iBT)
 - 6.5/IELTS

Be sure to use Rider University's **TOEFL Code: 2758**

If you wish to apply for admission to Rider's **English Language Institute (ELI)**, please visit www.rider.edu/eli or e-mail eli@rider.edu.

ADDITIONAL REQUIREMENTS

Depending upon your student status and visa needs, the following items must also be submitted as part of your application for admission:

Freshman Applicants

- Official secondary school records, including examination results, in the original language. If not in English, an English translation must also be supplied. Photocopies are not accepted.
- SAT I or ACT scores (required of students attending American schools; highly recommended of all others). Be sure to use these Rider codes:

SAT CODE: 2758 • ACT CODE: 2590

- If your previous institution was outside the United States, you may be required to have a course-by-course evaluation of your credits by any credential evaluation service that is a member of the National Association of Credential Evaluation Services (NACES). For a list of members, visit www.naces.org/members.htm.

Transfer Applicants

- Official transcripts and/or marksheets from each post-secondary institution attended. If not in English, an English translation must also be supplied.
- If your previous institution was outside the United States, you will be required to have a course-by-course evaluation of your credits by any credential evaluation service that is a member of the National Association of Credential Evaluation Services (NACES). For a list of members, visit www.naces.org/members.htm.

Student Visa Applicants

- Undergraduate International Student Supplement (certification of finances). Available at www.rider.edu/global.
- Supporting financial documentation, such as bank statements, scholarship award letter and loan guarantee.



ADMISSION DEADLINES

The following dates are for Fall 2015 (September) admission. Students seeking admission for Spring 2015 (January) should apply by November 1, 2014.

November 15: Early Action Application Deadline

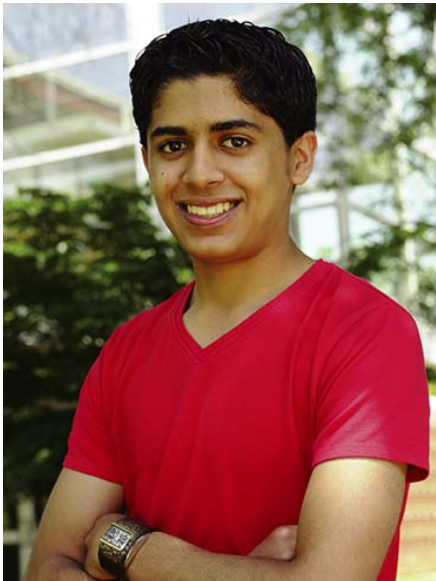
January 15: Freshman Scholarship Deadline and Recommended Application Deadline for All Freshmen

March 15: Application Deadline for International Freshmen

April 1: Transfer Scholarship Deadline and Recommended Application Deadline for All Transfer Students

ADVANCED CREDIT

- International Baccalaureate (IB) Examinations: Credit awarded for HL scores of 5 or better.
- Advanced Placement (AP) Examinations: Credit awarded for scores of 3 or better in most subjects.
- Foreign Educational Systems: Credit may be considered for students submitting results of select foreign examinations, including the General Certificate of Education (GCE/A-level).



FINANCIAL AID

Rider does not award need-based financial aid to international students. Americans living abroad wishing to apply for need-based financial aid must file the Free Application for Federal Student Aid (FAFSA) by March 1. Apply online at www.fafsa.gov.

SCHOLARSHIP OPPORTUNITIES

All international undergraduate students are eligible to receive Rider University scholarships, which are based upon your:

- academic record
- standardized test scores (if submission is required) and
- audition results (if required).

Scholarships vary from USD 5,000 to USD 18,000. Scholarship criteria are subject to change.

For more details on Rider scholarships, visit www.rider.edu/admissions.

COST OF ATTENDANCE

For the most current information about tuition, fees, and room and board, please visit www.rider.edu/global.

English Language Institute (ELI)

Serving student needs from beginner to advanced, Rider's ELI program will:

- Develop your listening, speaking, and reading and writing skills
- Introduce you to the American college experience
- Prepare you to continue to university-level academic classes

Program Highlights

- Small classes for maximum personal attention
- 6-week and 7-week intensive English courses with year-round start dates
- Instructors with advanced degrees and years of teaching experience
- 18 hours per week of four core classes (writing, reading, listening/speaking and grammar) plus a variety of electives
- Multiple start dates year-round

Conditional Admission to Rider University

Students interested in pursuing an undergraduate or graduate degree at Rider can apply for conditional admission to the University. Applicants must maintain a 2.70 GPA while in the ELI program, pass an internal exit exam and meet the University's basic admission requirements.

Services Offered to ELI Students

All ELI students are considered Rider students, with full access to University clubs, activities, resources and services, including the library, student recreation center and health services.

Rider's Center for International Education offers comprehensive support, including pre-arrival information, new student orientation and immigration advisement. We also offer airport pick-up service upon arrival.

ELI students are not required to live on campus but housing is available (double rooms).

To Apply

- Go to www.rider.edu/eli
- Click on "How to Apply"
- Complete the application, follow the prompts and hit "Submit"

To learn more, email eli@rider.edu or visit www.rider.edu/eli

Are You Applying to Rider's Westminster College of the Arts?

Please note that an audition and/or interview is required for most programs. Visit www.rider.edu/ugauditions for details and dates.

"I was honored to be awarded a scholarship to attend such a prestigious school. Rider is offering me the opportunity to improve my academic skills and performance."

Sraj Alkhalifah • Accounting

FOR MORE INFORMATION

Lawrenceville Campus

Rider University
2083 Lawrenceville Road
Lawrenceville, New Jersey
08648-3099
USA

Telephone
+1-609-896-5042

Email
global@rider.edu

Website
www.rider.edu/global

Skype
RiderGlobal

English Language Institute

Email
eli@rider.edu

Website
www.rider.edu/eli

Princeton Campus

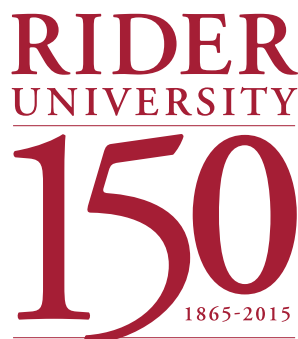
Westminster Choir College of Rider University
101 Walnut Lane
Princeton, New Jersey
08540-3819
USA

Telephone
+1-609-921-7144

Email
wccadmission@rider.edu

Website
www.rider.edu/westminster

Connect with us!



www.rider.edu/global

Academic Programs

Undergraduate Programs

Business Administration

Accounting
Advertising
Business Administration
Business Economics
Entrepreneurial Studies
Finance
Global Supply Chain Management
Human Resource Management
Information Systems
 Application Development
 E-Business & Multimedia
 Network & Enterprise Management
International Business
Management & Leadership
Marketing
Sport Management
Undeclared Business

Education

Business Education (Teacher of Business)
Elementary Education (Concentrations Available)
Secondary Education (Concentrations Available)

Fine Arts, Music & Performing Arts

LAWRENCEVILLE CAMPUS

Arts Administration
 Art, Dance, General, Music, Theatre
Dance
 Performance, Dance Studies (Combined with
 Elementary Education Only)
Fine Arts
 Art
Music Studies
Musical Theatre (B.F.A.)
Popular Music Culture
Theatre
 Performance, Theatre Studies

PRINCETON CAMPUS

Music*
Music Education*
Music Education/Vocal Performance
 (Double Major)
Organ Performance
Piano
Sacred Music*
Theory & Composition*
Voice Performance
* *Primary Instrument of Organ, Piano or Voice*

Liberal Arts and Sciences

American Studies
Behavioral Neuroscience
Biochemistry
Biology
Chemistry
Communication Studies
Criminal Justice
Digital Media: Film, Television & Radio
Economics
English
 Cinema Studies, Literature, Writing
Environmental Sciences
French
Geosciences
German
Global Studies
Graphic Design
History
Integrated Sciences & Math
Journalism
Marine Sciences
Mathematics
Philosophy
Political Science

Psychology
Public Relations
Sociology
Spanish
Web Design
Undeclared Liberal Arts

Pre-Professional Programs

Pre-Allied Health
Pre-Law
Pre-Med, Pre-Dental

Fifth-Year Graduate Options

Master of Accountancy (M.Acc.)
Master of Business Administration (M.B.A.)
Master of Arts in Applied Psychology
Master of Arts in Business Communication
Master of Arts in Teaching

Graduate Programs

Business Administration

Master of Accountancy (M.Acc.) With Concentration Options in:

- Corporate Accounting for Managers
- Entrepreneurship
- Finance
- Fraud & Forensic Accounting
- Global Business
- Information Systems
- Management
- Marketing

Master of Business Administration (M.B.A.) With Concentration Options in:

- Corporate Accounting for Managers
- Entrepreneurship
- Finance
- Forensic Accounting
- Global Business
- Information Systems
- Management
- Marketing

Education & Liberal Arts

Master of Arts (M.A.)

- Applied Psychology
 Applied Behavior Analysis
- Business Communication
- Counseling Services
- Curriculum, Instruction & Supervision
- Educational Administration
- Organizational Leadership
- Reading/Language Arts
- Special Education

Educational Specialist (Ed.S.)

- Counseling Services
- School Psychology

Music

PRINCETON CAMPUS/ WESTMINSTER CHOIR COLLEGE

Master of Music (M.M.)

- American & Public Musicology
- Choral Conducting
- Composition
- Music Education
- Organ Performance
- Piano Accompanying & Coaching
- Piano Pedagogy & Performance
- Piano Performance
- Sacred Music
- Voice Pedagogy & Performance

Master of Music Education (M.Ed.)

Master of Voice Pedagogy (M.V.P.)