



Rider University

NBCB Entrepreneurial Center

Makerspace

2024/2025

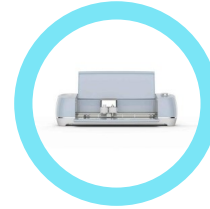
Our Maker Machines



Glowforge Aura Laser Cutter



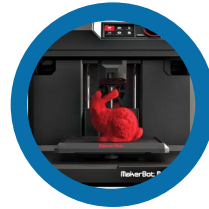
Cricut EasyPress 3



Cricut Explore Air 2



Brother Computerized Sewing and Quilting Machine



MakerBot 3D Printers



HP Sprocket Studio Plus Photo Printer



Brother Color Photo Label Printer

Supply List

MakerBot 3D Printer:

- PLA 1.75mm - provided
- Hemp PLA 1.75mm: earth-thanks.com
- Pomegranate PLA 1.75mm: earth-thanks.com
- TPU 1.75mm: amazon.com

Cricut Explore Air 2 and Cricut EasyPress 3

- Most of the supplies, including shirts, can be found on Michaels or JoAnn Fabrics stores and websites.
- If purchasing from Amazon please be very careful on the authenticity of the product. We only use Cricut vinyl.

Make sure you are purchasing cricut vinyl for the heat press.



Supply List

Glowforge Aura Laser Cutter

All glowforge supplies must be authentic glowforge products that are sold only online from Michaels and JoAnn Fabrics

Brother CoAura Color Photo/Label Printer

Brother genuine CZ continuous length can be purchased from [amazon.com](https://www.amazon.com) in different width sizes



Policies

The Center provides Two Types of Services:

1. Self Serve
2. Manufacturing Fulfillment of Orders

For both services our policies are the same:



Training, technical support and help when needed!



All materials must be purchased independently except for PLA.



Graphic files must be in JPEG format with transparent background








3D Files must be in STL format



All machines are the property of the center and cannot be removed



Self Serve Policies

-  Sign up is on a first come first served basis. Please email entrepreneurshipctr@rider.edu to sign up or stop by and sign up in person
-  Maximum time on maker machines is 2 hours per session. Additional time can be booked separately.
-  Maker machines can only be operated when a Center for Entrepreneurial Studies Staff member is present
-  Machines must be used properly with accordance to the manual
-  Clean-up after use is a must

Manufacturing Fulfillment of Orders



Sign up is on a first come first served basis. Please email entrepreneurshipctr@rider.edu to sign up or stop by and sign up in person



All art files must be given in proper format at the time of order.



Placement and size of art on merchandise must be decided prior to order



All supplies must be provided to the center to fulfill order.



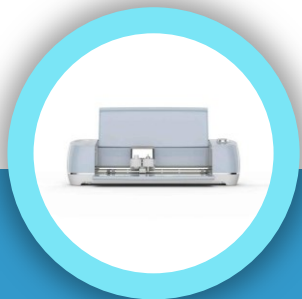
All orders will be reviewed prior to manufacturing with approval needed by both parties.



The order form is a contract that must be paid prior to manufacturing.

Manufacturing Fulfillment Price List

Our Center will always provides FREE training, technical support and help when needed!



Cricut Printing and Heat Press

T-shirts* Single Color Double Color	\$1.50 per shirt \$3.00 per shirt
Canvas bags* Single Color Double Color	\$1.50 per bag \$3.00 per bag
Travel mugs/cups* Single Color	\$1.50 per cup



Graphic Design

Unique Logo	\$20.00 with 3 edits
Unique 3D File	\$30.00



3D Printing

PLA Filament	Free
TPU Filament*	
Eco Organic Filament*	

*Services only include production only. All materials must be purchased independently.

Graphic files must be in JPEG format. 3D Files must be in STL format.xt

Our Team



Dr Ronald Cook
Founder/Professor



Lora Hudicka
Director/Lecturer



Jessie Hertz
Graduate Assistant



Ian Smith
**Undergraduate
Assistant**

Contact Us



entrepreneurshipctr@rider.edu



www.rider.edu/academics/centers-institutes/center-entrepreneurial-studies



Sweigart Hall 2nd Floor Rm 226





Thank You

See You Soon!