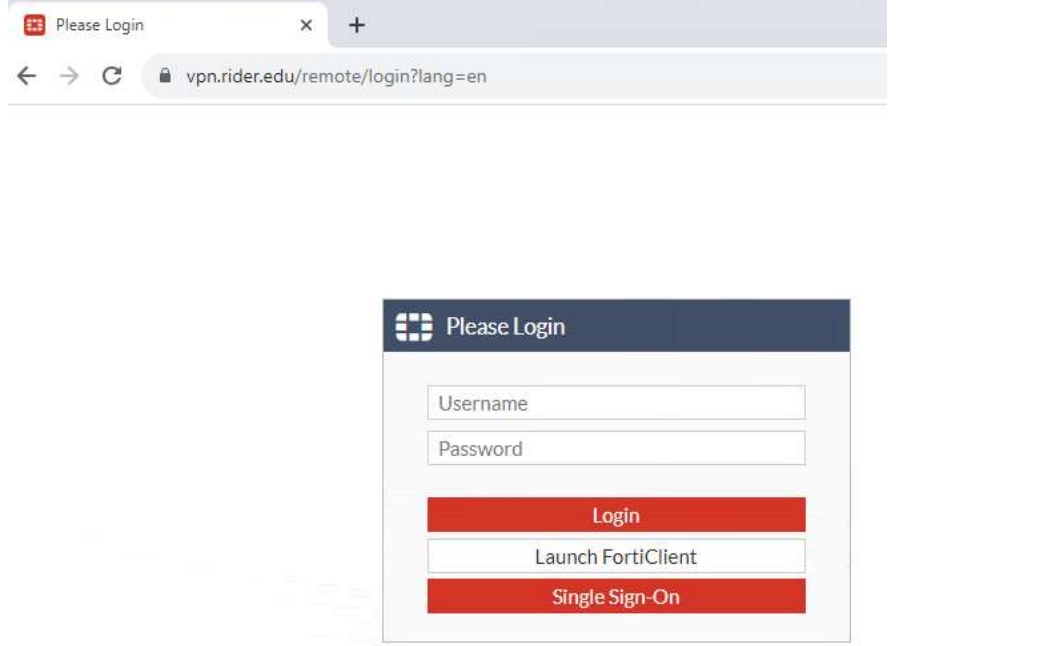
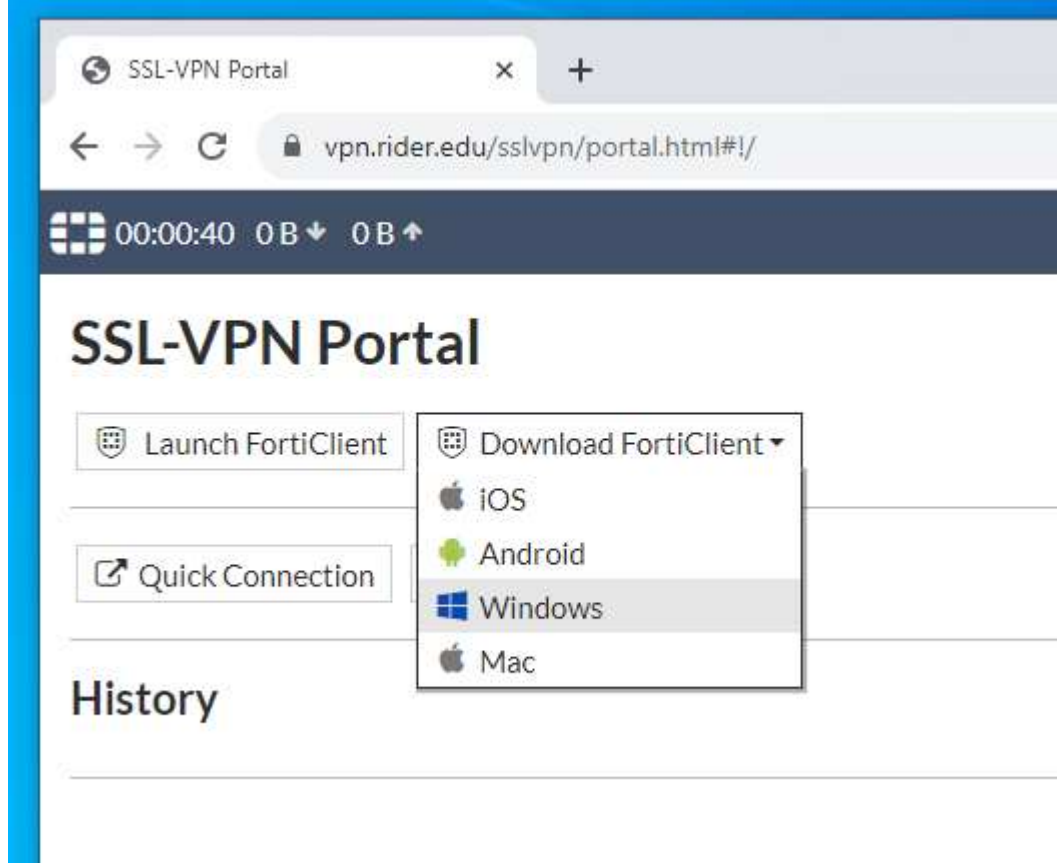
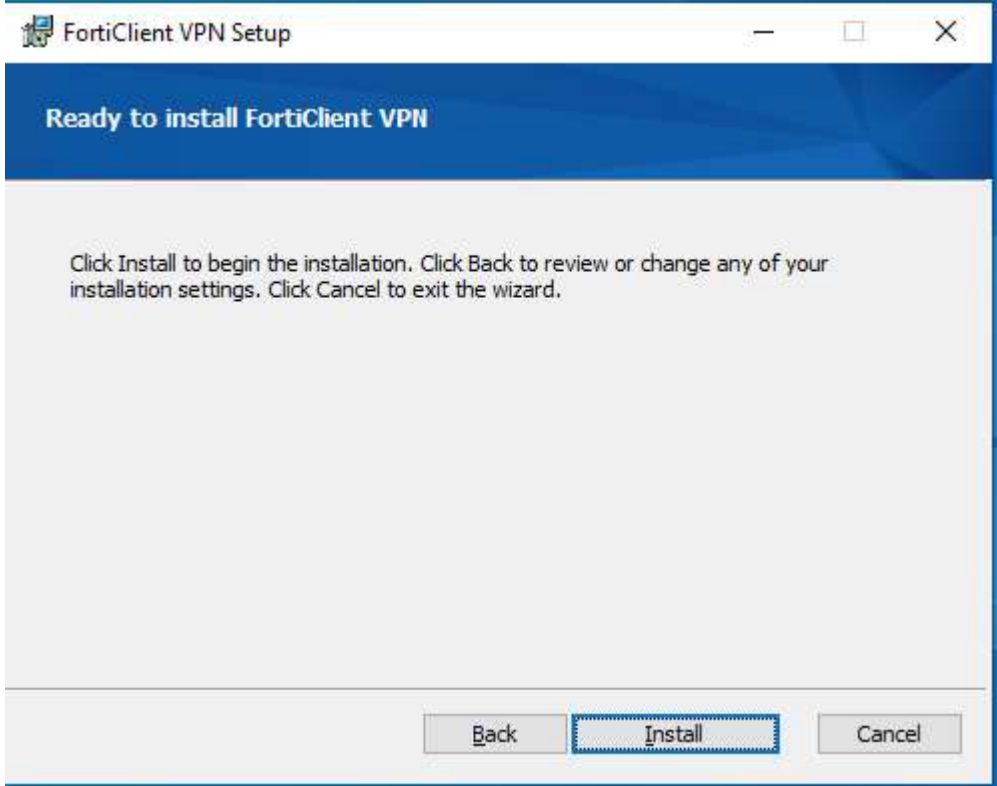
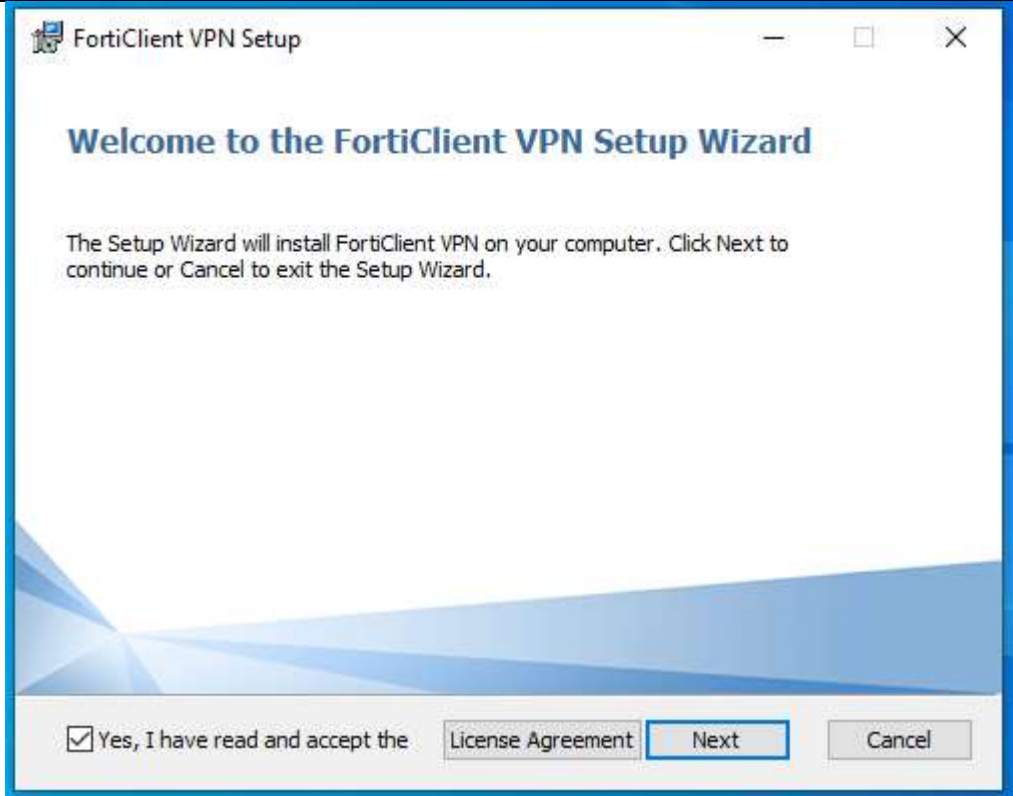
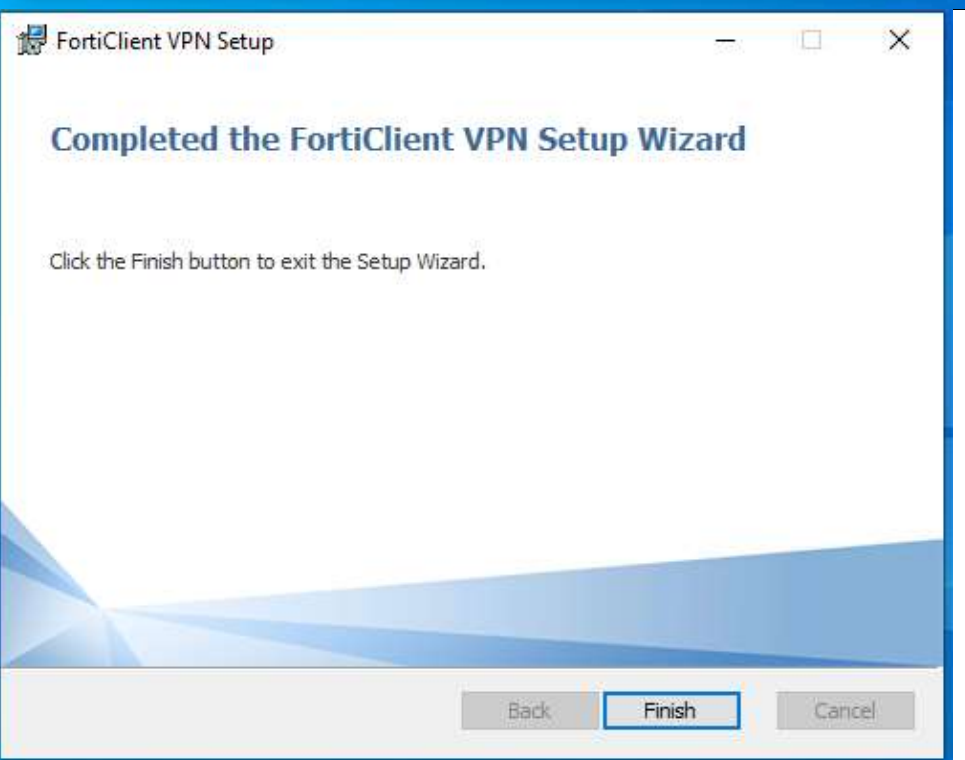
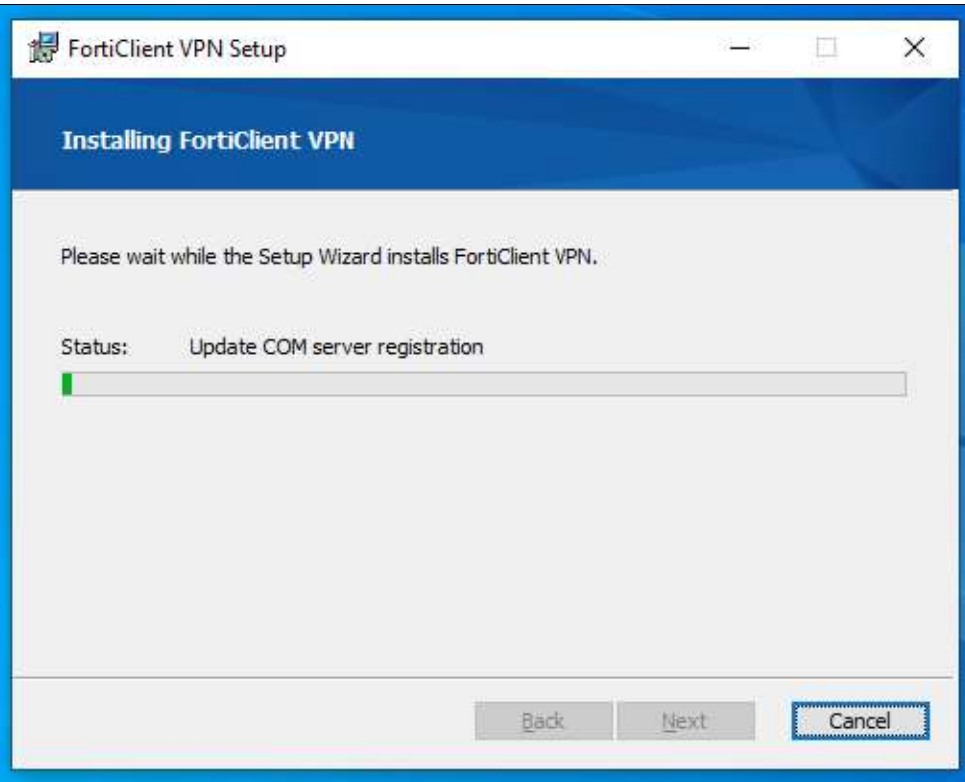


Important Note: Before proceeding, please be aware that the VPN will NOT WORK if you are on campus.

<p>Step 1. In a Browser, go to https://vpn.rider.edu And select “Single Sign-On”. Follow the prompts to login with your RiderKey Account.</p>	
<p>Step 2. Once connected, select “Download FortiClient” and select your operating system. For the purposes of this guide, we will assume you are using Windows.</p>	

Step 3. Once the installer has completed downloading, launch the installer from your downloads folder and follow the prompts.

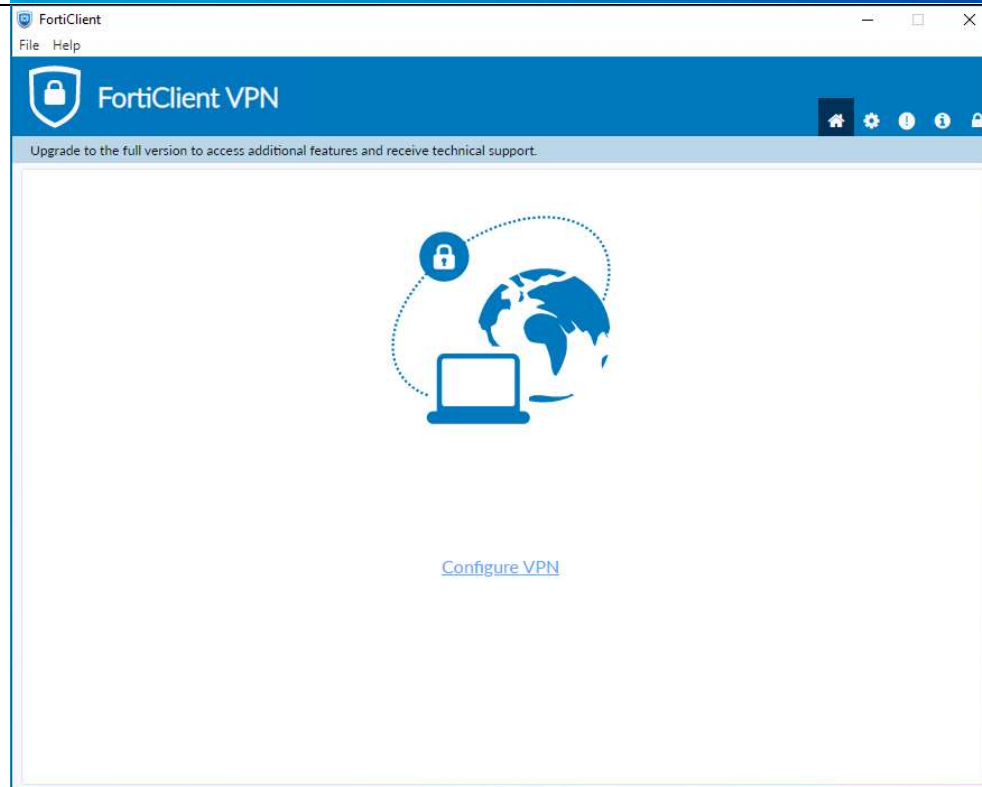
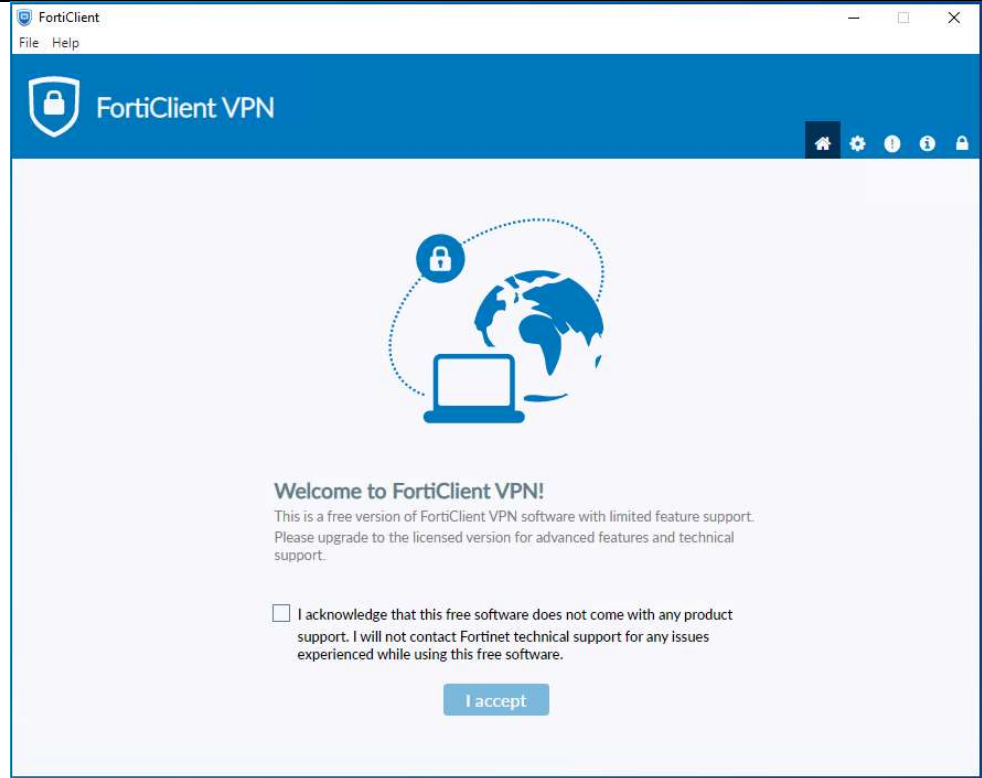




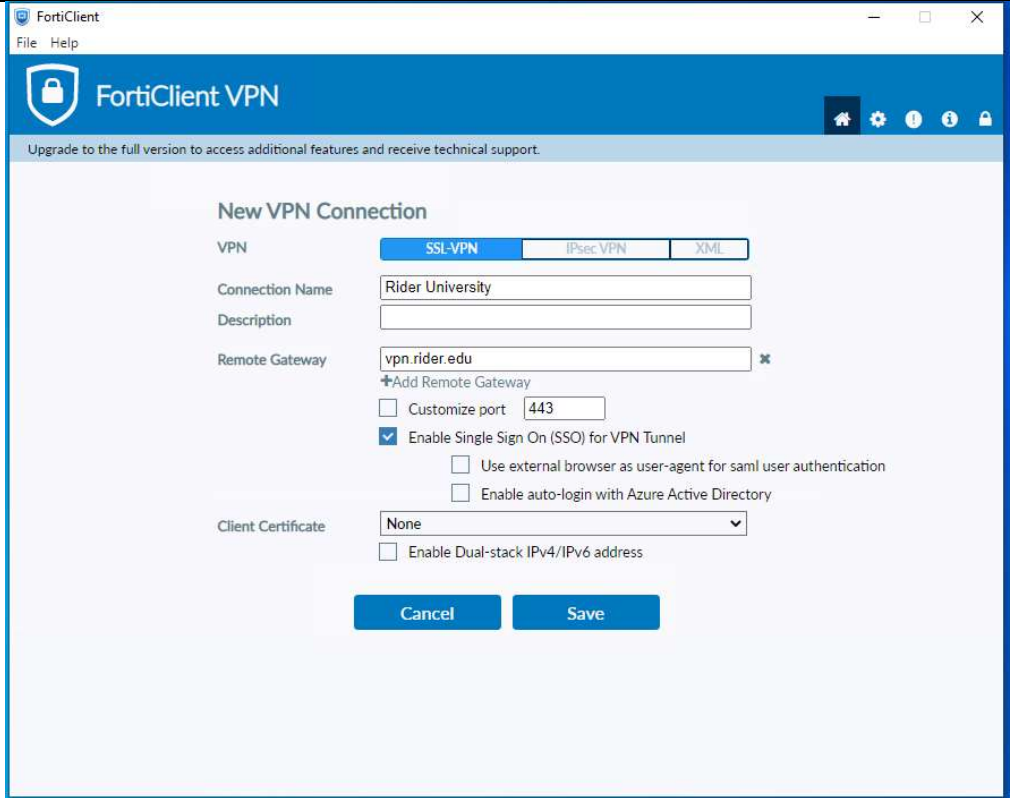
Step 4. Now that the installation has completed, launch the FortiClient VPN by using the desktop icon or the task tray icon in the lower right corner of your screen.



Step 5. To Configure the VPN, Accept the Terms and choose "Configure VPN".

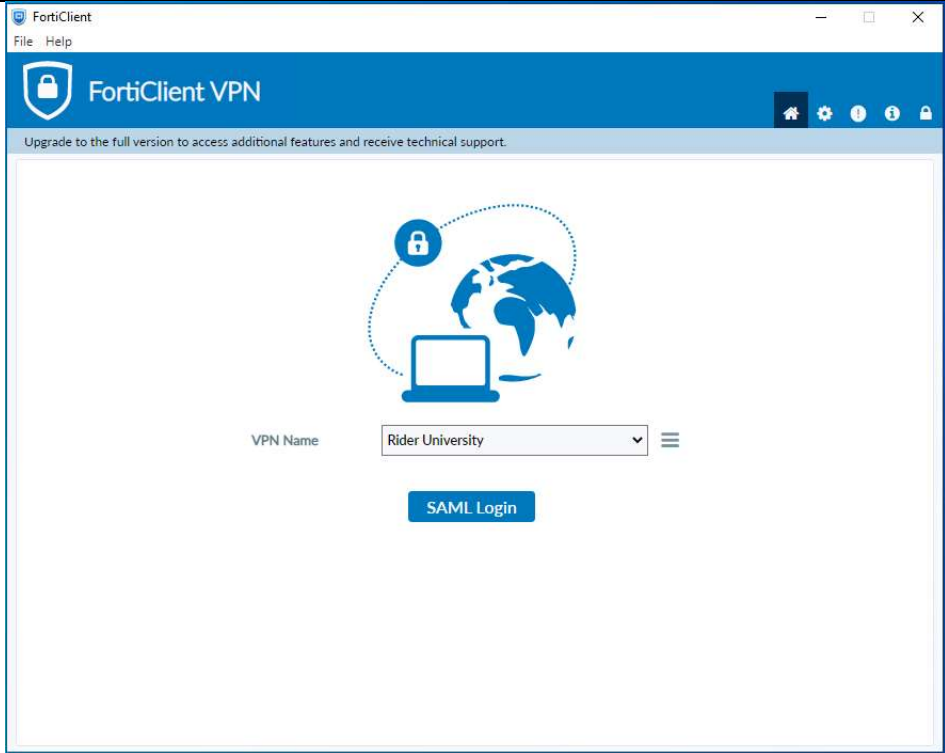


Step 6. For Connection Name use “Rider University” or something descriptive that you will recognize. For the Remote Gateway use “vpn.rider.edu”. Finally Select “Enable Single Sign On (SSO) for VPN Tunnel” and click Save.



Step 7. Now let's login to confirm connectivity.

Select “SAML Login” and follow the prompts to authenticate using your RiderKey Account.



Conclusion: Congratulations, if your login was successful you should now see a screen that looks like this and you are successfully connected.

You can close this window and continue to work at this point.

