

EasyPrint Yearly Usage Summary

2007

| Lawrenceville Campus - Labs | Total Jobs* | Total Sheets** | Total Pages*** |
|--------------------------------|----------------|-------------------|-------------------|
| January | 6522 | 36681 | 36681 |
| February | | | |
| March | | | |
| April | | | |
| May | | | |
| June | | | |
| July | | | |
| August | | | |
| September | | | |
| October | | | |
| November | | | |
| December | | | |
| Year-to-Date Total | 6522 | 36681 | 36681 |

| Lawrenceville Campus - Library | Total Jobs* | Total Sheets** | Total Pages*** |
|-----------------------------------|----------------|-------------------|-------------------|
| January | 6553 | 25766 | 45595 |
| February | | | |
| March | | | |
| April | | | |
| May | | | |
| June | | | |
| July | | | |
| August | | | |
| September | | | |
| October | | | |
| November | | | |
| December | | | |
| Year-to-Date Total | 6553 | 25766 | 45595 |

| Westminster Campus - Labs | Total Jobs* | Total Sheets** | Total Pages*** |
|------------------------------|----------------|-------------------|-------------------|
| January | 1700 | 11547 | 11547 |
| February | | | |
| March | | | |
| April | | | |
| May | | | |
| June | | | |
| July | | | |
| August | | | |
| September | | | |
| October | | | |
| November | | | |
| December | | | |
| Year-to-Date Total | 1700 | 11547 | 11547 |

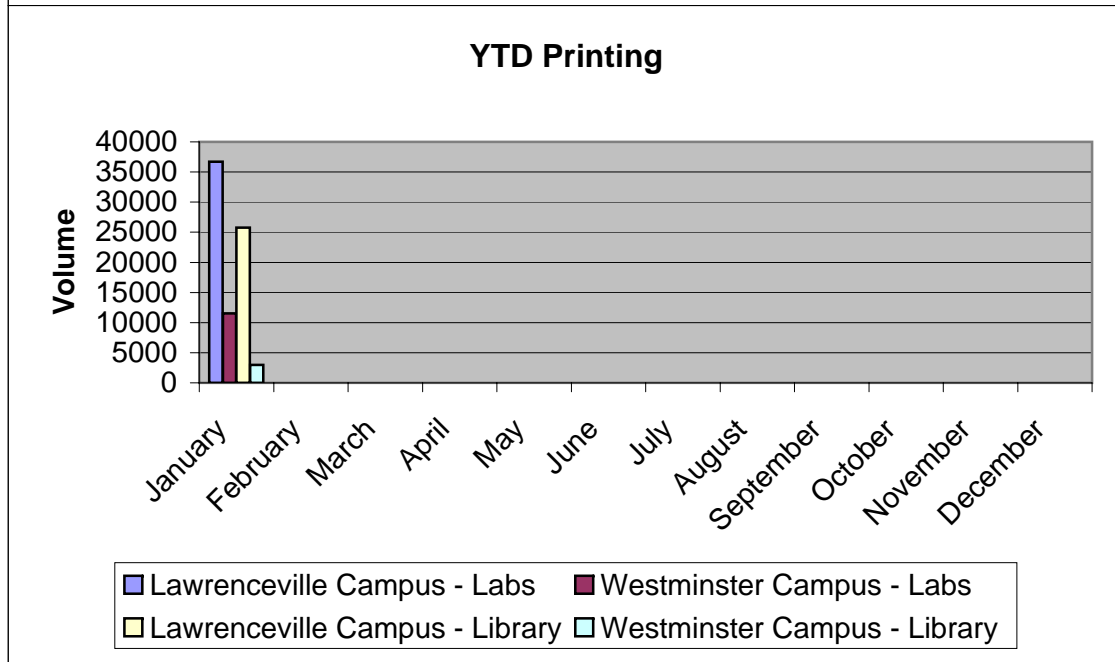
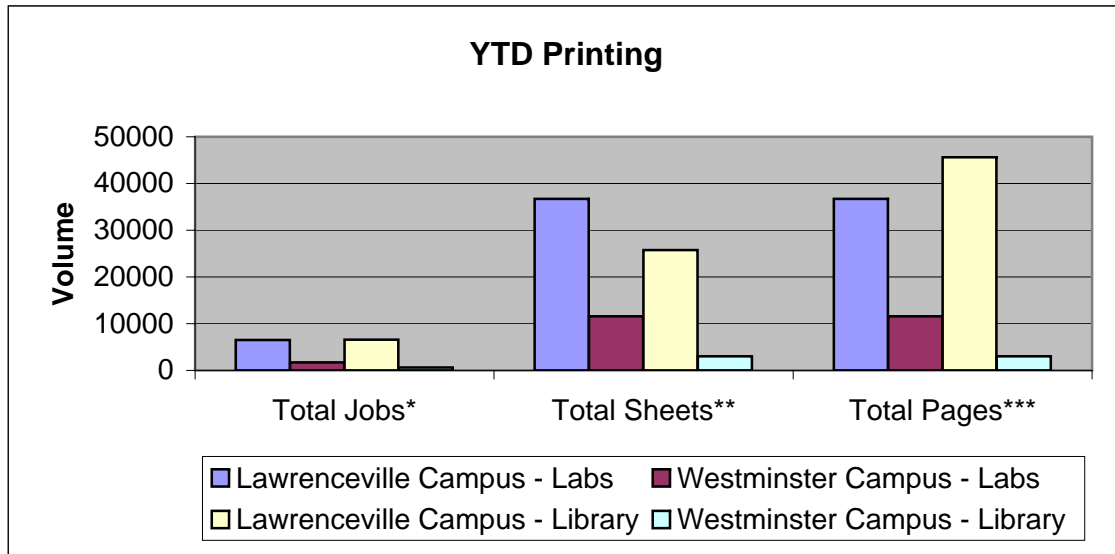
| Westminster Campus - Library | Total Jobs* | Total Sheets** | Total Pages*** |
|---------------------------------|----------------|-------------------|-------------------|
| January | 603 | 2999 | 2999 |
| February | | | |
| March | | | |
| April | | | |
| May | | | |
| June | | | |
| July | | | |
| August | | | |
| September | | | |
| October | | | |
| November | | | |
| December | | | |
| Year-to-Date Total | 603 | 2999 | 2999 |

| | | | |
|----------------------------|-------------|--------------|--------------|
| Labs YTD Total | 8222 | 48228 | 48228 |
| Libraries YTD Total | 7156 | 28765 | 48594 |

* The number of documents sent to the system for printing - may consist of multiple sheets, pages or

** A "sheet" is one (1) piece of paper, both front and

*** A "page" is one (1) side of a sheet of paper



EasyPrint Monthly Usage Report

January 2007

| Lawrenceville Campus - Labs | Total Jobs* | Total Sheets** | Total Pages*** |
|-----------------------------|----------------|-------------------|-------------------|
| 24-Hour Lounge | 367 | 2057 | 2057 |
| Bart Luedeke Center 126 | 1904 | 9967 | 9967 |
| Daly's Dining Hall | 712 | 3845 | 3845 |
| Fine Arts 115 | 1800 | 10215 | 10215 |
| Memorial Kiosks | 956 | 6313 | 6313 |
| Switlik C106 | 783 | 4284 | 4284 |
| Monthly Total | 6522 | 36681 | 36681 |

Westminster Campus - Labs

| | | | |
|----------------------|-------------|--------------|--------------|
| Arts & Sciences Lab | 1364 | 8779 | 8779 |
| Commuter Lounge | 104 | 652 | 652 |
| Talbott Foyer | 232 | 2116 | 2116 |
| Monthly Total | 1700 | 11547 | 11547 |

Lawrenceville Campus - Library

| | | | |
|----------------------|-------------|--------------|--------------|
| Moore Lab | 2305 | 9705 | 17127 |
| Moore LAN | 4248 | 16061 | 28468 |
| Monthly Total | 6553 | 25766 | 45595 |

Westminster Campus - Library

| | | | |
|----------------------|------------|-------------|-------------|
| Talbott Library | 603 | 2999 | 2999 |
| Monthly Total | 603 | 2999 | 2999 |

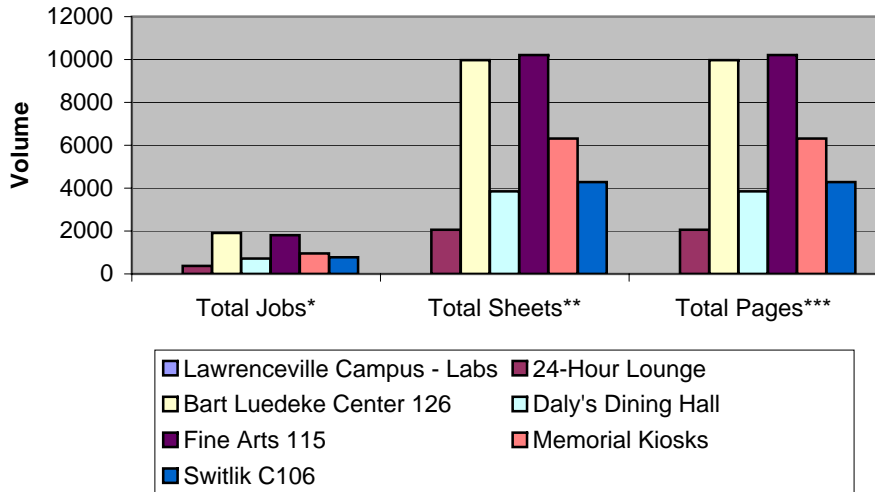
| | | | |
|--------------------------------|-------------|--------------|--------------|
| Labs Monthly Total | 8222 | 48228 | 48228 |
| Libraries Monthly Total | 7156 | 28765 | 48594 |

* The number of documents sent to the system for printing - may consist of multiple sheets, pages or copies

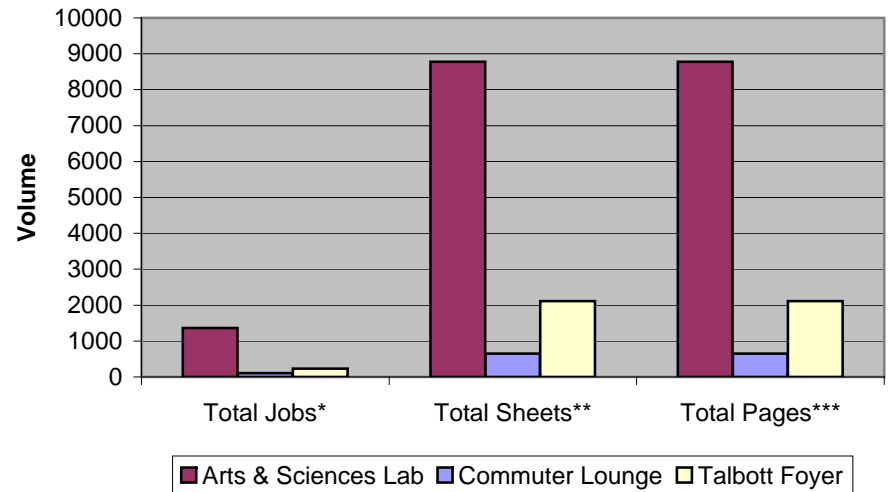
** A "sheet" is one (1) piece of paper, both front and back

*** A "page" is one (1) side of a sheet of paper

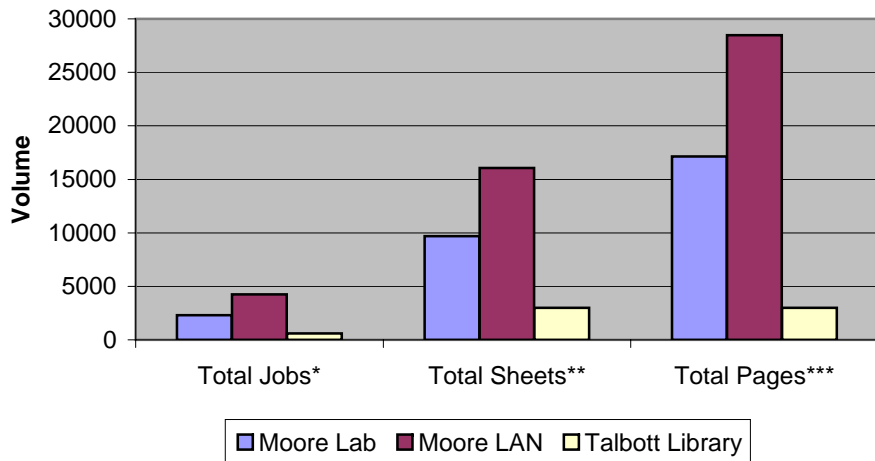
Lawrenceville Labs



Westminster Labs



Libraries



Total Printing (LAW & WCC)

